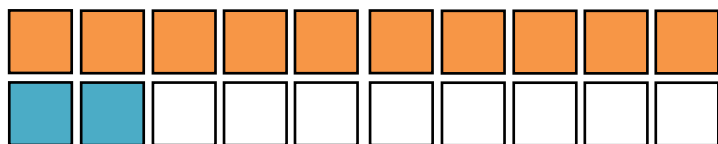
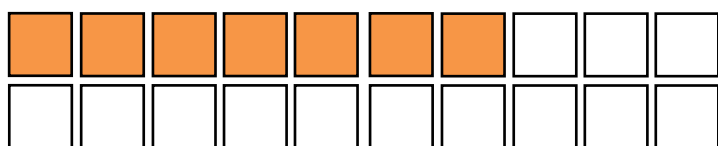


# Tiere og enere

Tæl og løs regnestykket



$$\begin{array}{c} \square \\ \bigcirc \end{array} + \begin{array}{c} \square \\ \bigcirc \end{array} = \bigcirc$$



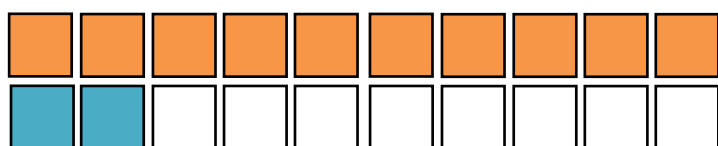
$$\begin{array}{c} \square \\ \bigcirc \end{array} + \begin{array}{c} \square \\ \bigcirc \end{array} = \bigcirc$$



$$\begin{array}{c} \square \\ \bigcirc \end{array} + \begin{array}{c} \square \\ \bigcirc \end{array} = \bigcirc$$



$$\begin{array}{c} \square \\ \bigcirc \end{array} + \begin{array}{c} \square \\ \bigcirc \end{array} = \bigcirc$$



$$\begin{array}{c} \square \\ \bigcirc \end{array} + \begin{array}{c} \square \\ \bigcirc \end{array} = \bigcirc$$



$$\begin{array}{c} \square \\ \bigcirc \end{array} + \begin{array}{c} \square \\ \bigcirc \end{array} = \bigcirc$$



$$\begin{array}{c} \square \\ \bigcirc \end{array} + \begin{array}{c} \square \\ \bigcirc \end{array} = \bigcirc$$

# Plus

Løs plusstykkerne

$1 + 11 = \bigcirc$

$2 + 11 = \bigcirc$

$8 + 7 = \bigcirc$

$7 + 3 = \bigcirc$

$9 + 10 = \bigcirc$

$11 + 5 = \bigcirc$

$16 + 3 = \bigcirc$

$7 + 6 = \bigcirc$

$5 + 12 = \bigcirc$

$4 + 14 = \bigcirc$

$6 + 13 = \bigcirc$

$5 + 6 = \bigcirc$

$16 + 2 = \bigcirc$

$4 + 7 = \bigcirc$

$7 + 13 = \bigcirc$

$1 + 19 = \bigcirc$

$1 + 13 = \bigcirc$

$8 + 6 = \bigcirc$



# Dobbelt op

Løs plusstykkerne. Farv hvert resultat i talrækken under.

$1 + 1 = \bigcirc$

$6 + 6 = \bigcirc$

$2 + 2 = \bigcirc$

$7 + 7 = \bigcirc$

$3 + 3 = \bigcirc$

$8 + 8 = \bigcirc$

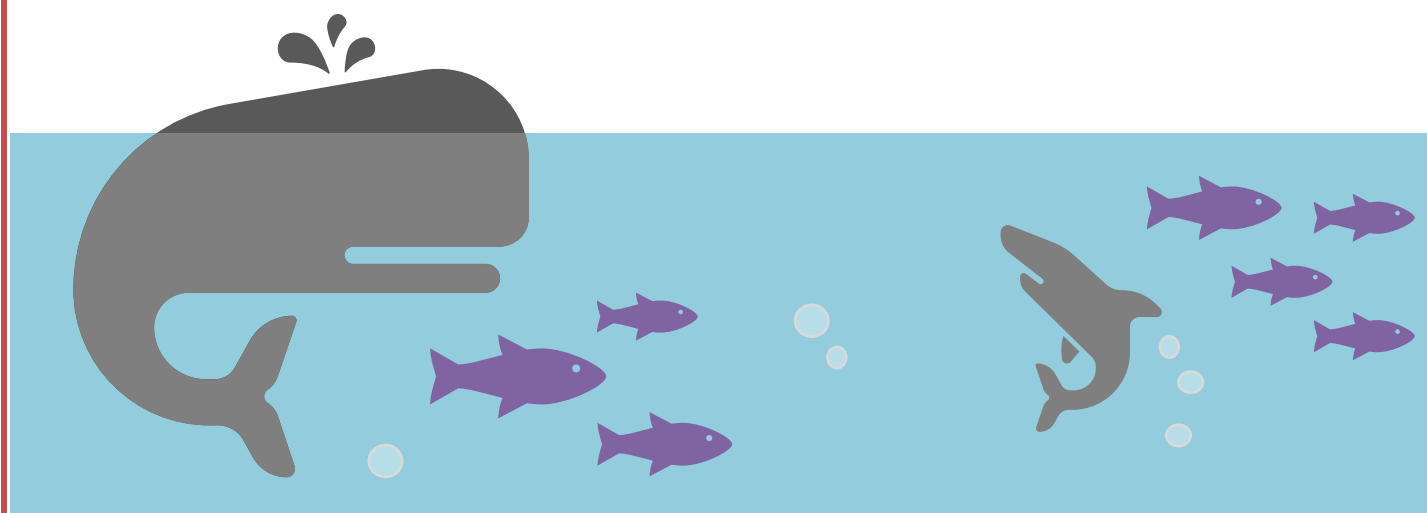
$4 + 4 = \bigcirc$

$9 + 9 = \bigcirc$

$5 + 5 = \bigcirc$

$10 + 10 = \bigcirc$

1	2	3	4	5	6	7	8	9	10
11	12	13	14	15	16	17	18	19	20



# Plus

Lav regnestykker, der giver 10

+

+

+

+

+

+

Lav regnestykker, der giver 20

+

+

+

+

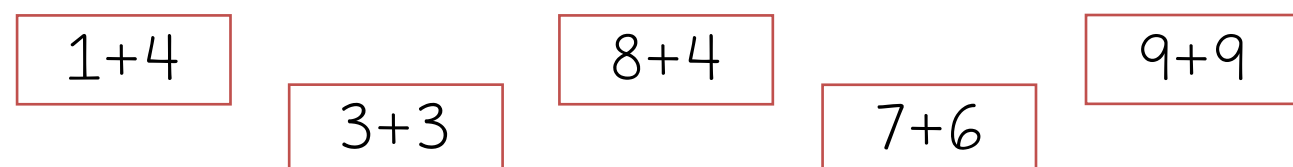
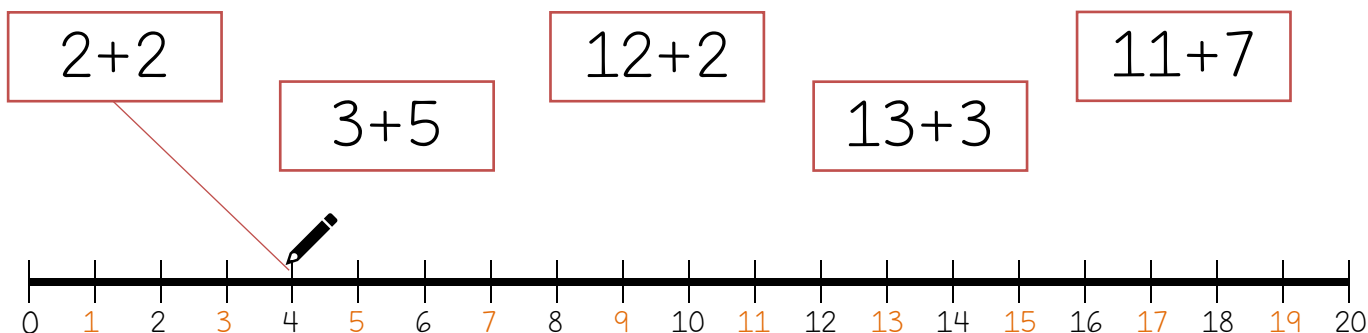
+

+

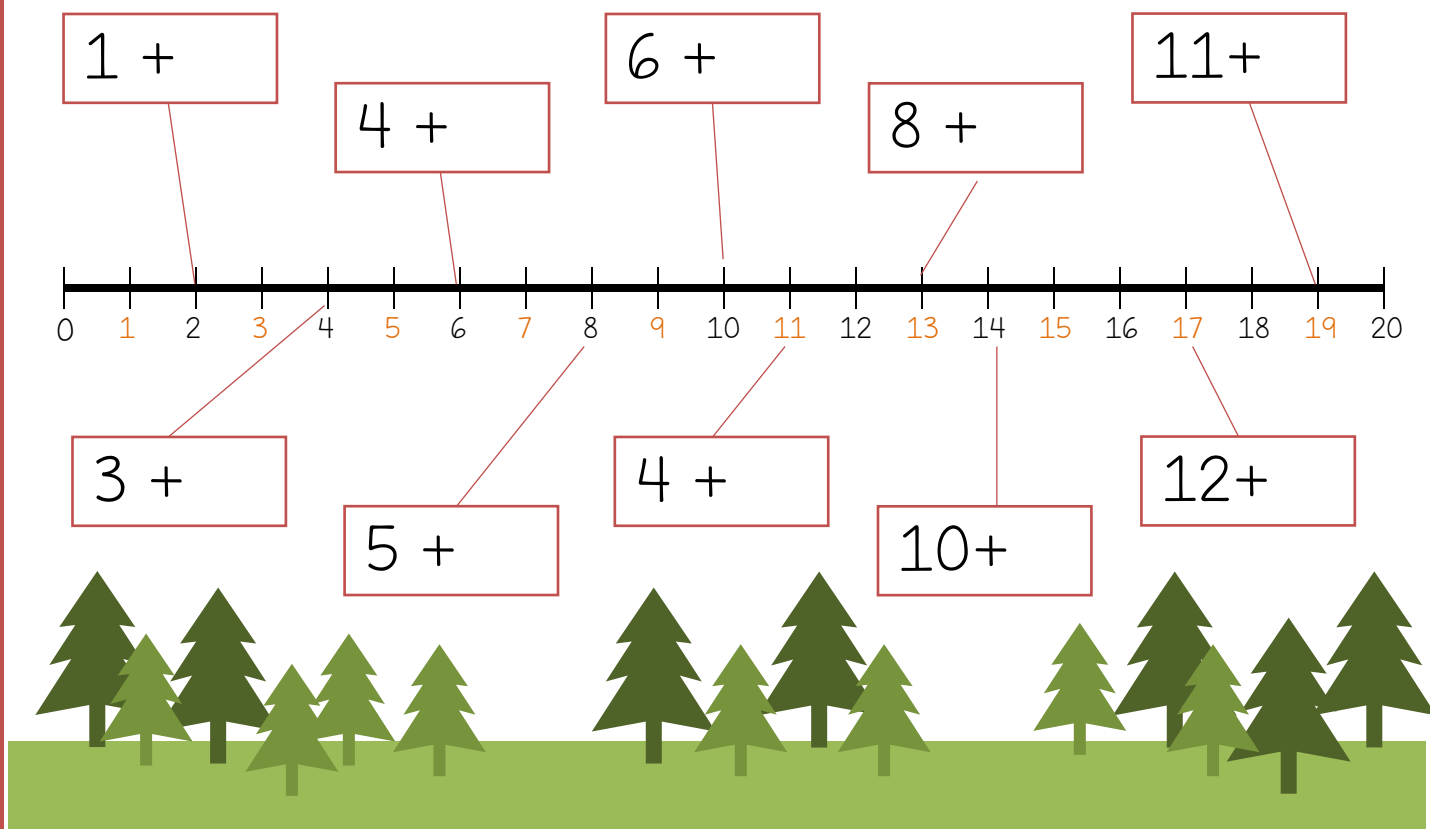


# Plus

Løs regnestykket og sæt en streg til det rigtige resultat på tal-linjen.



Skriv det sidste tal, så det passer med resultatet på tal-linjen.



# Plus

Læg øjnene på terningerne sammen. Hvad giver det?

$$\begin{array}{|c|} \hline \square \text{ (1)} + \square \text{ (3)} + \square \text{ (2)} = \bigcirc \\ \hline \end{array}$$

$$\begin{array}{|c|} \hline \square \text{ (2)} + \square \text{ (6)} + \square \text{ (4)} = \bigcirc \\ \hline \end{array}$$

$$\begin{array}{|c|} \hline \square \text{ (5)} + \square \text{ (5)} + \square \text{ (4)} = \bigcirc \\ \hline \end{array}$$

$$\begin{array}{|c|} \hline \square \text{ (6)} + \square \text{ (2)} + \square \text{ (2)} = \bigcirc \\ \hline \end{array}$$

$$\begin{array}{|c|} \hline \square \text{ (4)} + \square \text{ (3)} + \square \text{ (1)} = \bigcirc \\ \hline \end{array}$$

$$\begin{array}{|c|} \hline \square \text{ (2)} + \square \text{ (2)} + \square \text{ (3)} = \bigcirc \\ \hline \end{array}$$

$$\begin{array}{|c|} \hline \square \text{ (4)} + \square \text{ (5)} + \square \text{ (6)} = \bigcirc \\ \hline \end{array}$$

$$\begin{array}{|c|} \hline \square \text{ (2)} + \square \text{ (5)} + \square \text{ (1)} = \bigcirc \\ \hline \end{array}$$

$$\begin{array}{|c|} \hline \square \text{ (1)} + \square \text{ (4)} + \square \text{ (6)} = \bigcirc \\ \hline \end{array}$$

A vertical sequence of dice faces, each tilted at an angle. From top to bottom: a red die with 1 dot, a green die with 2 dots, a purple die with 3 dots, an orange die with 4 dots, a blue die with 5 dots, and a pink die with 6 dots. Plus signs (+) are placed between each die. At the bottom, an equals sign (=) is followed by an empty red circle.

Filnavn: Plus1-20 t.docx  
Bibliotek: /Users/mette/Library/Containers/com.microsoft.Word/Data/Documents  
Skabelon: /Users/mette/Library/Group Containers/UBF8T346G9.Office/User Content.localized/Templates.localized/mat form tom.dotx  
Titel:  
Emne:  
Forfatter: METTE SANDLYKKE  
Nøgleord:  
Kommentarer:  
Oprettelsesdato: 24/04/2019 19.23.00  
Versionsnummer: 2  
Senest gemt: 24/04/2019 19.23.00  
Senest gemt af: METTE SANDLYKKE  
Redigeringstid: 0 minutter  
Senest udskrevet: 24/04/2019 19.23.00  
Ved seneste fulde udskrift  
Sider: 7  
Ord: 328 (ca.)  
Tegn: 2.002 (ca.)